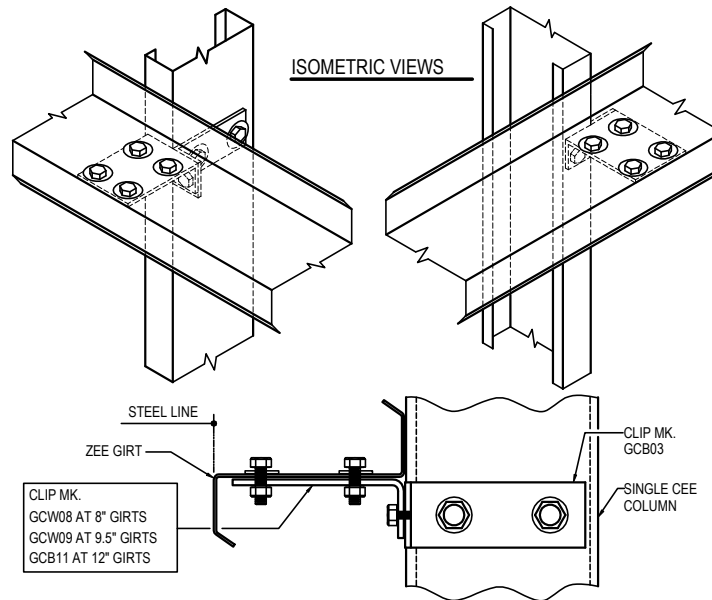
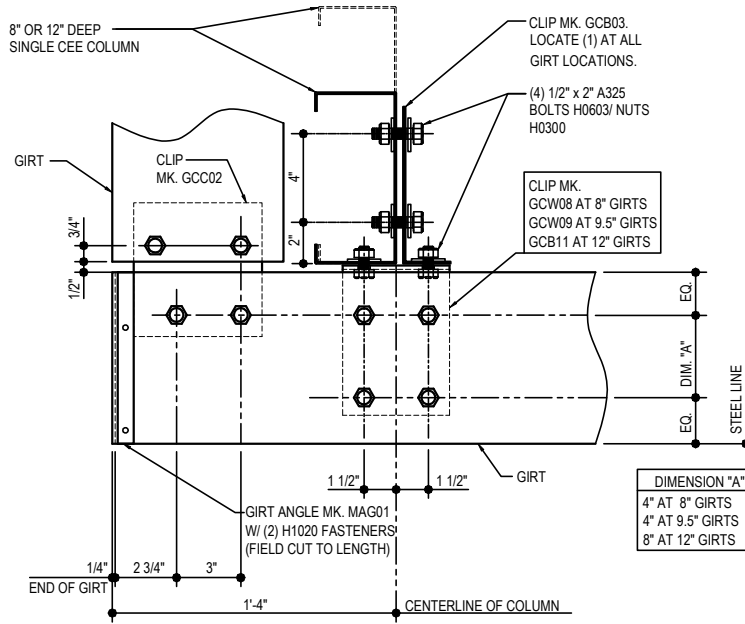


BYPASS CORNER GIRT DETAILS

- CF0015 - SINGLE CEE COLUMN AT BYPASS GIRTS
 - CF0250 - GIRT TERMINATION DETAIL
 - CF0256 - HR GIRT TERMINATION DETAIL
 - CF0257 - HR GIRT TERMINATION @ C.F. COL.
 - CF0275 - GIRT TERMINATION @ MASONRY WALL DETAIL
 - CF0351 - SIMPLE SPAN GIRT TERMINATION @ C.F. COL.
 - CF0360 - BYPASS GIRT AT CF CORNER COL.
 - CF0500 - 8" GIRT TERMINATION DETAIL
 - CF0510 - 8" GIRT TERMINATION @ MASONRY WALL DETAIL
 - CF0520 - 9 1/2" GIRT TERMINATION DETAIL
 - CF0530 - 9 1/2" GIRT TERMINATION @ MASONRY WALL DETAIL
 - CF1001 - BOLT PLACEMENT DETAIL
 - CF1010 - BYPASS CORNER GIRT DETAIL
 - CF1020 - BYPASS CORNER CEE GIRT DETAIL
 - CF1060 - BYPASS CORNER HR GIRT DETAIL
 - CF1200 - BYPASS CORNER GIRT TERMINATION DETAIL
 - CF1210 - BYPASS CORNER GIRT TERMINATION DETAIL
 - CF1220 - HR GIRT TERMINATION DETAIL
 - CF1260 - BYPASS CORNER GIRT TERMINATION @ MASONRY WALL DETAIL
 - CF1270 - GIRT TERMINATION @ MASONRY WALL DETAIL
 - CF1280 - HR GIRT TERMINATION @ MASONRY WALL DETAIL
-

CF0015 - SINGLE CEE COLUMN AT BYPASS GIRTS

[Download the DWG file by clicking here.](#)



SINGLE CEE COLUMN BYPASS CORNER

LEFT HAND DETAIL SHOWN, RIGHT HAND OPPOSITE
NOTE: USE (8) 1/2" X 1 1/4" A307 BOLTS H0500 / NUTS H0400.
REFERENCE ERECTOR NOTE FOR TYPICAL WASHER REQUIREMENTS

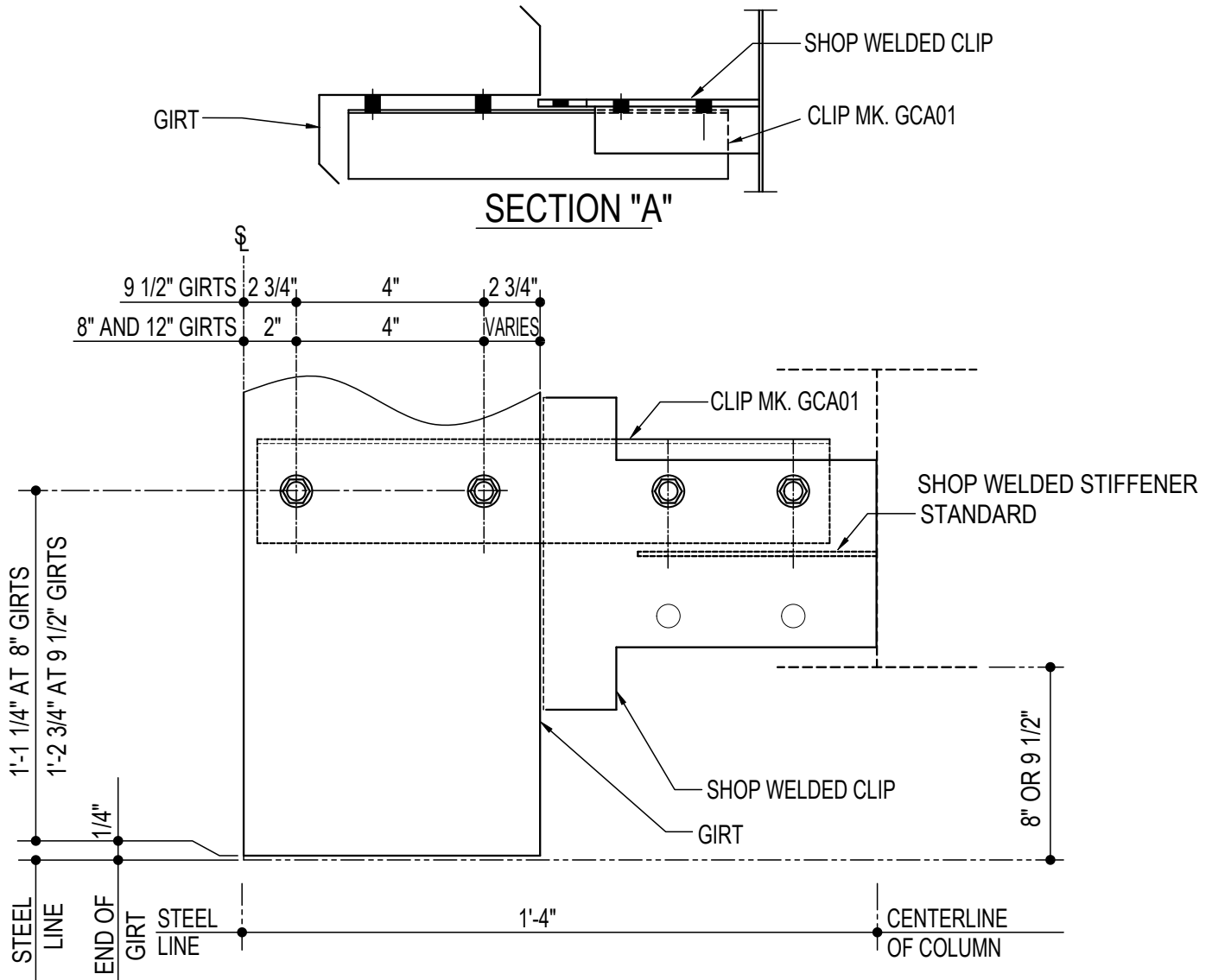
CF0015

Detailer Notes:

- 1) N/A

CF0250 - GIRT TERMINATION DETAIL

[Download the DWG file by clicking here.](#)



GIRT TERMINATION DETAIL

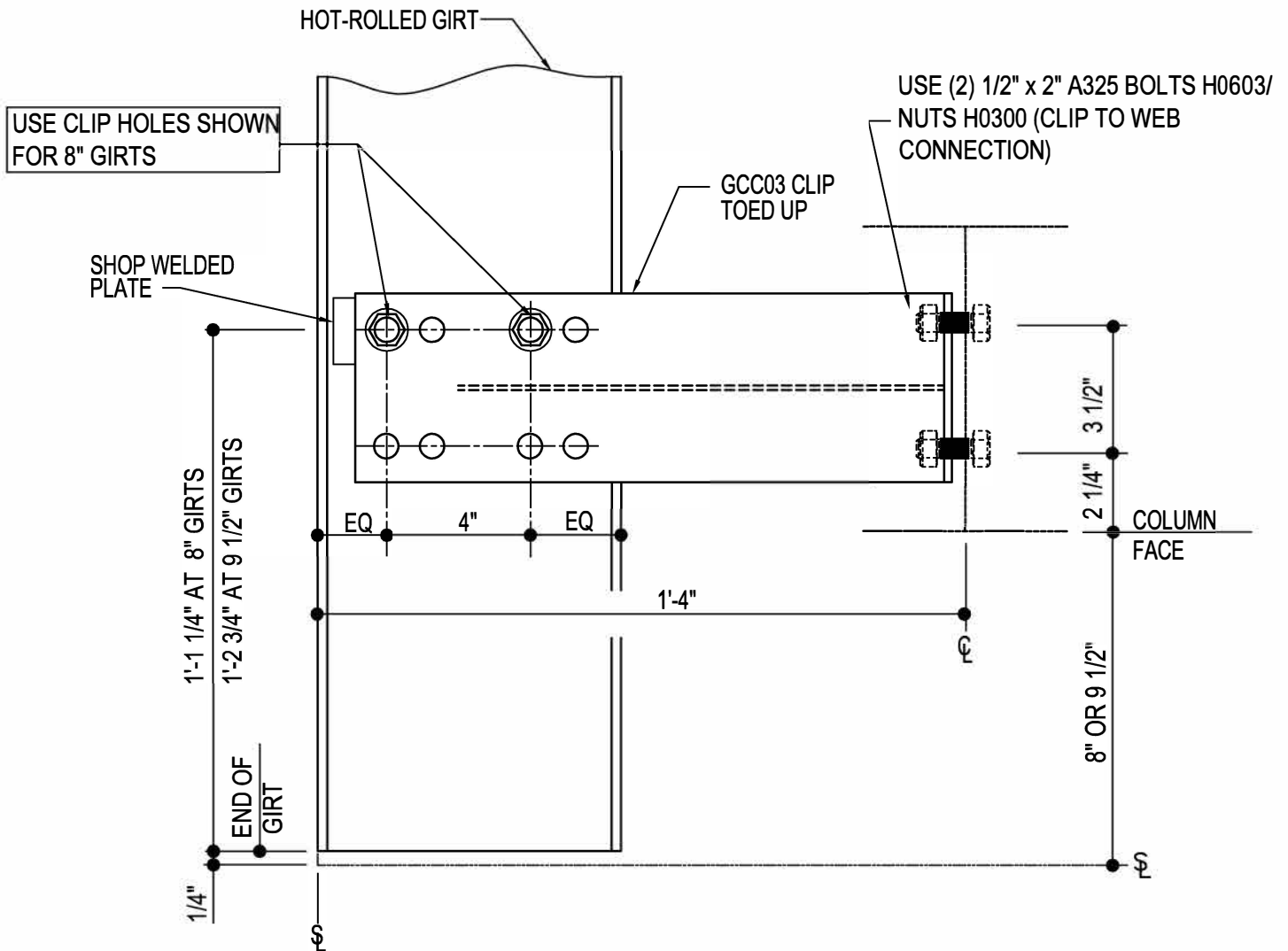
NOTE: USE (4) 1/2" x 1 1/4" A307 BOLTS H0500/NUTS H0400
 REFERENCE STANDARD WASHER DETAIL FOR TYPICAL WASHER
 REQUIREMENTS

CF0250

- Detailer Notes:**
- 1) WELDED CLIP TO COLUMN : GF102
 - 2) ADD STIFFENER: WS_04

CF0256 - H.R. GIRT TERMINATION DETAIL

[Download the DWG file by clicking here.](#)



HOT-ROLLED GIRT TERMINATION DETAIL

LEFT HAND DETAIL SHOWN, RIGHT HAND OPPOSITE
 NOTE: USE (2) 1/2" x 2" A325 BOLTS (H0603) & NUTS (H0300)
 REFERENCE ERECTOR NOTE FOR TYPICAL WASHER REQUIREMENTS

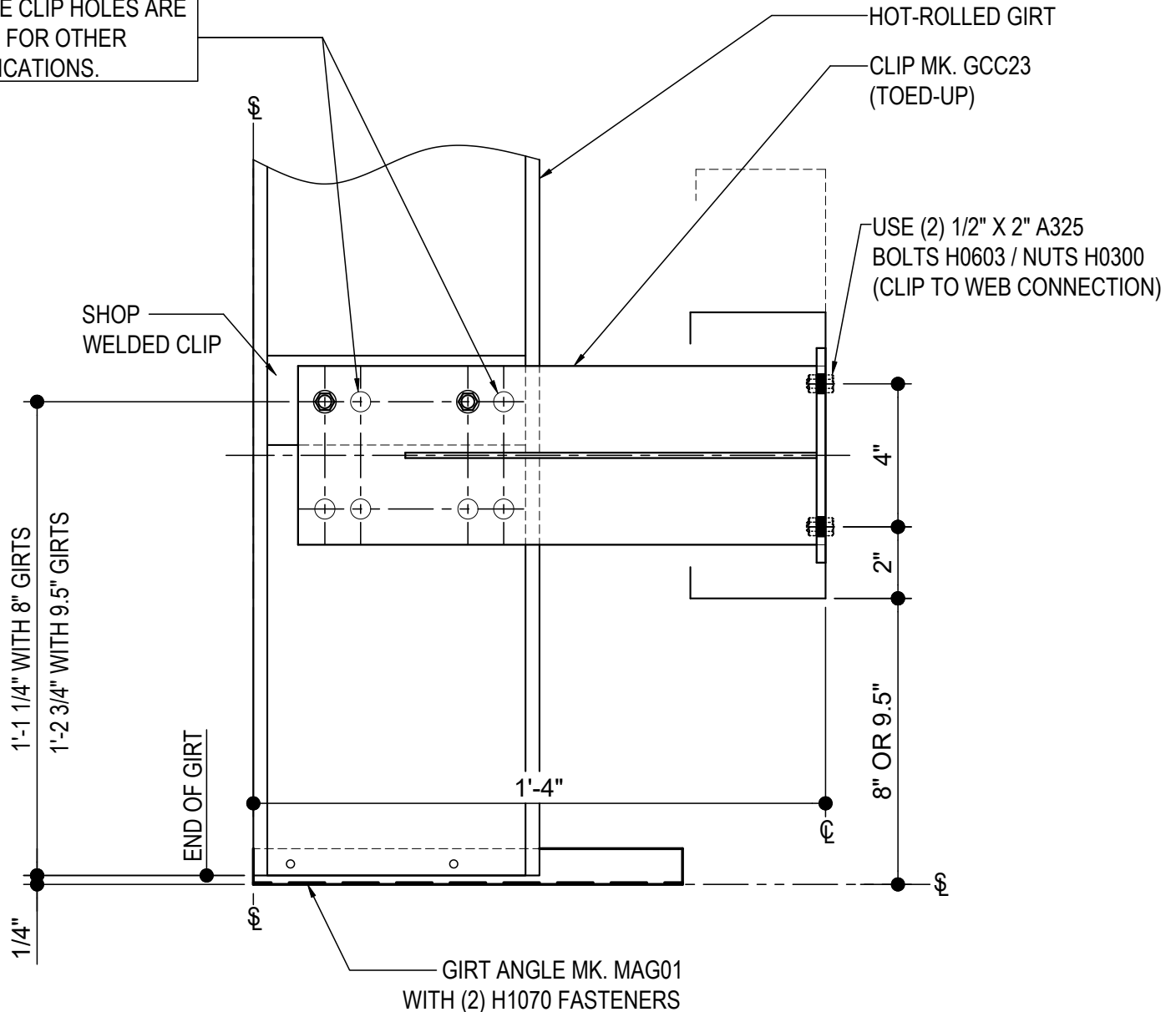
CF0256

- Detailer Notes:**
- 1) WELDED CLIP TO HR GIRT : HCS08
 - 2) DETAIL IS FOR BU/HR COLUMN ONLY.

CF0257 - HOT-ROLLED GIRT TERMINATION @ C.F. COL.

[Download the DWG file by clicking here.](#)

THESE CLIP HOLES ARE USED FOR OTHER APPLICATIONS.



HOT-ROLLED GIRT TERMINATION @ C.F. COL.

LEFT HAND DETAIL SHOWN. RIGHT HAND OPPOSITE

NOTE: USE (2) 1/2" X 2" A325 BOLTS (H0603) & NUTS (H0300)

REFERENCE ERECTOR NOTE FOR TYPICAL WASHER REQUIREMENTS

CF0257

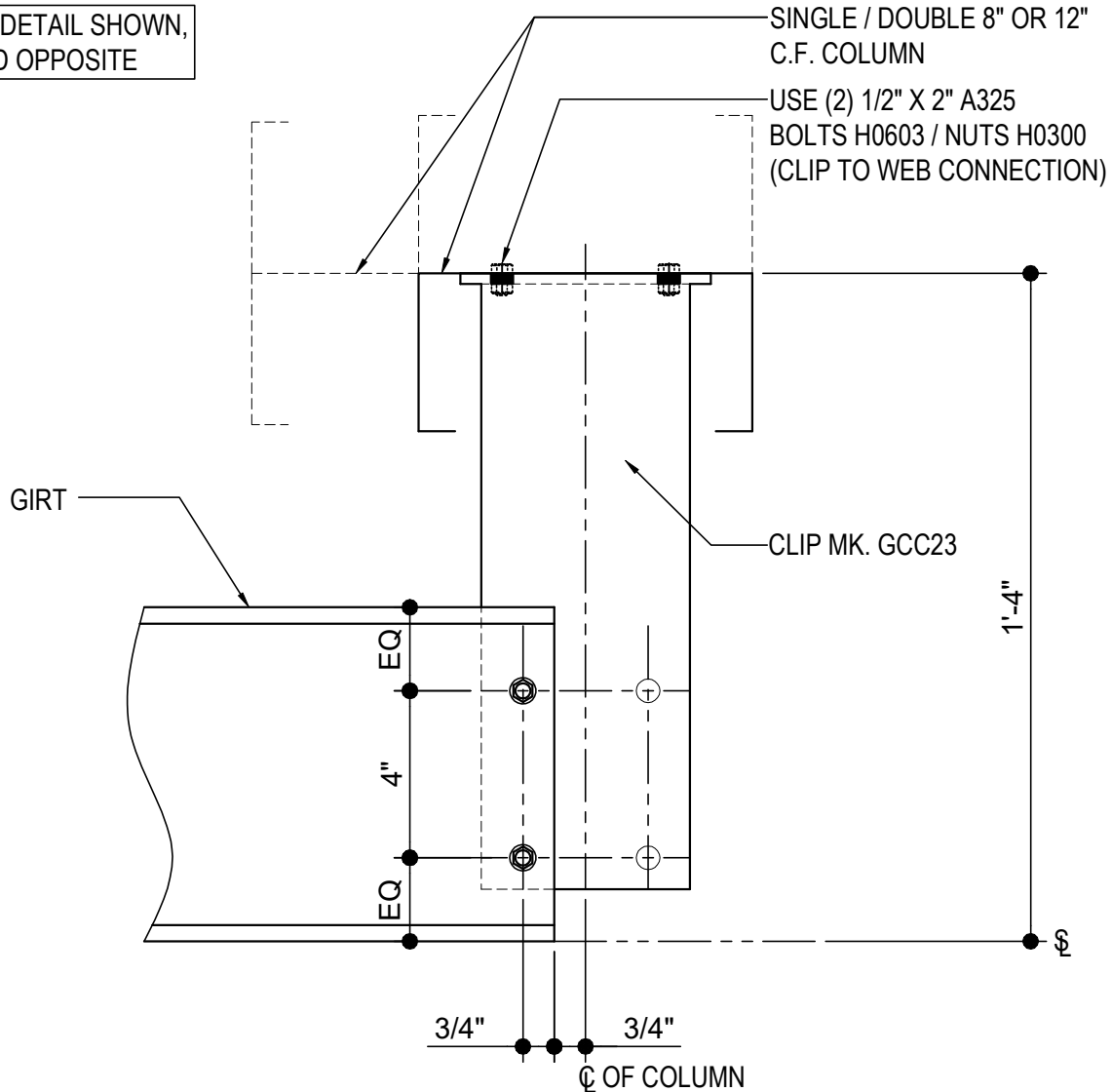
Detailer Notes:

- 1) THIS DETAIL IS FOR COLD FORMED COLUMN CONDITIONS ONLY.
- 2) THE SHOP WELDED CLIP SHOWN IN THE DETAIL, IS A HCS08..

CF0351 - SIMPLE SPAN GIRT TERMINATION @ C.F. COL.

[Download the DWG file by clicking here.](#)

LEFT HAND DETAIL SHOWN,
RIGHT HAND OPPOSITE



SIMPLE SPAN GIRT TERMINATION @ C.F. COL.

SIMPLE-SPAN GIRT TERMINATION AT INTERIOR COLUMN

NOTE: USE (2) 1/2" X 1 1/4" A307 BOLTS (H0500) & NUTS (H0400)

REFERENCE ERECTOR NOTE FOR TYPICAL WASHER REQUIREMENTS

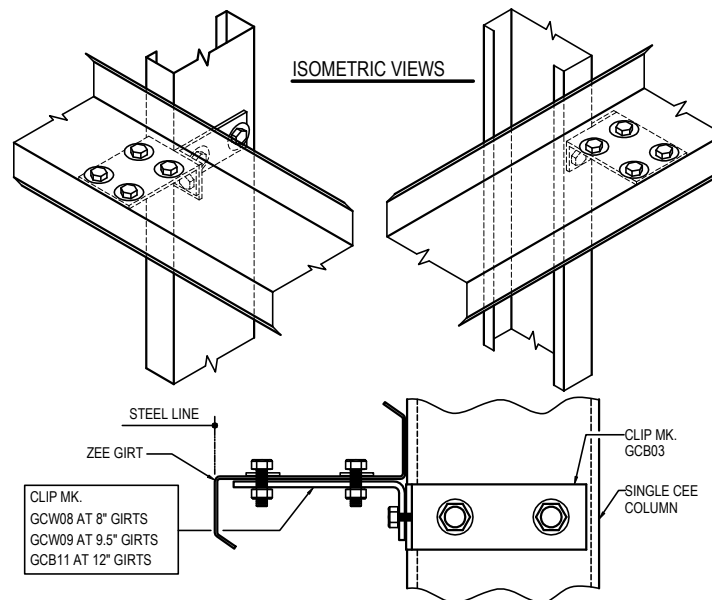
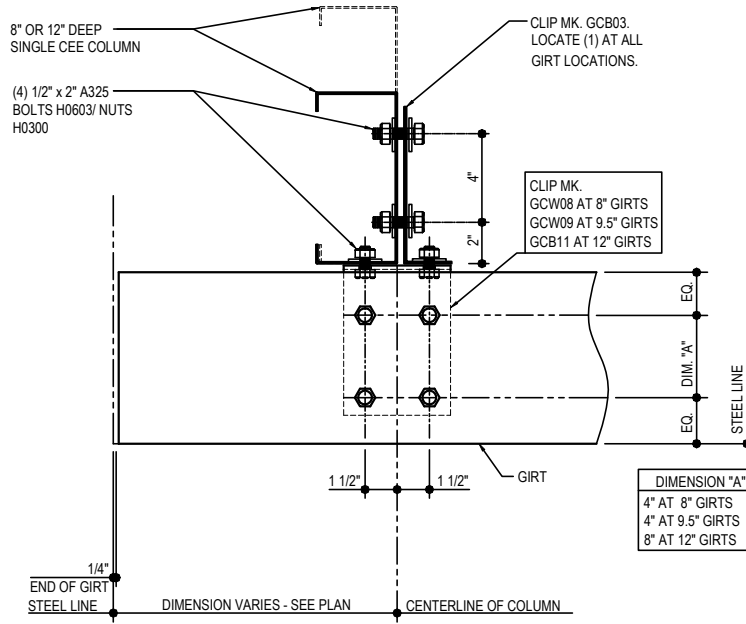
CF0351

Detailer Notes:

- 1) THIS DETAIL IS FOR COLD FORMED COLUMN CONDITIONS ONLY.

CF0360 - BYPASS GIRT AT CF CORNER COL.

[Download the DWG file by clicking here.](#)



BYPASS GIRT AT CF CORNER COL.

LEFT HAND DETAIL SHOWN, RIGHT HAND OPPOSITE
NOTE: USE (4) 1/2" X 1 1/4" A307 BOLTS H0500 / NUTS H0400.
REFERENCE ERECTOR NOTE FOR TYPICAL WASHER REQUIREMENTS

CF0360

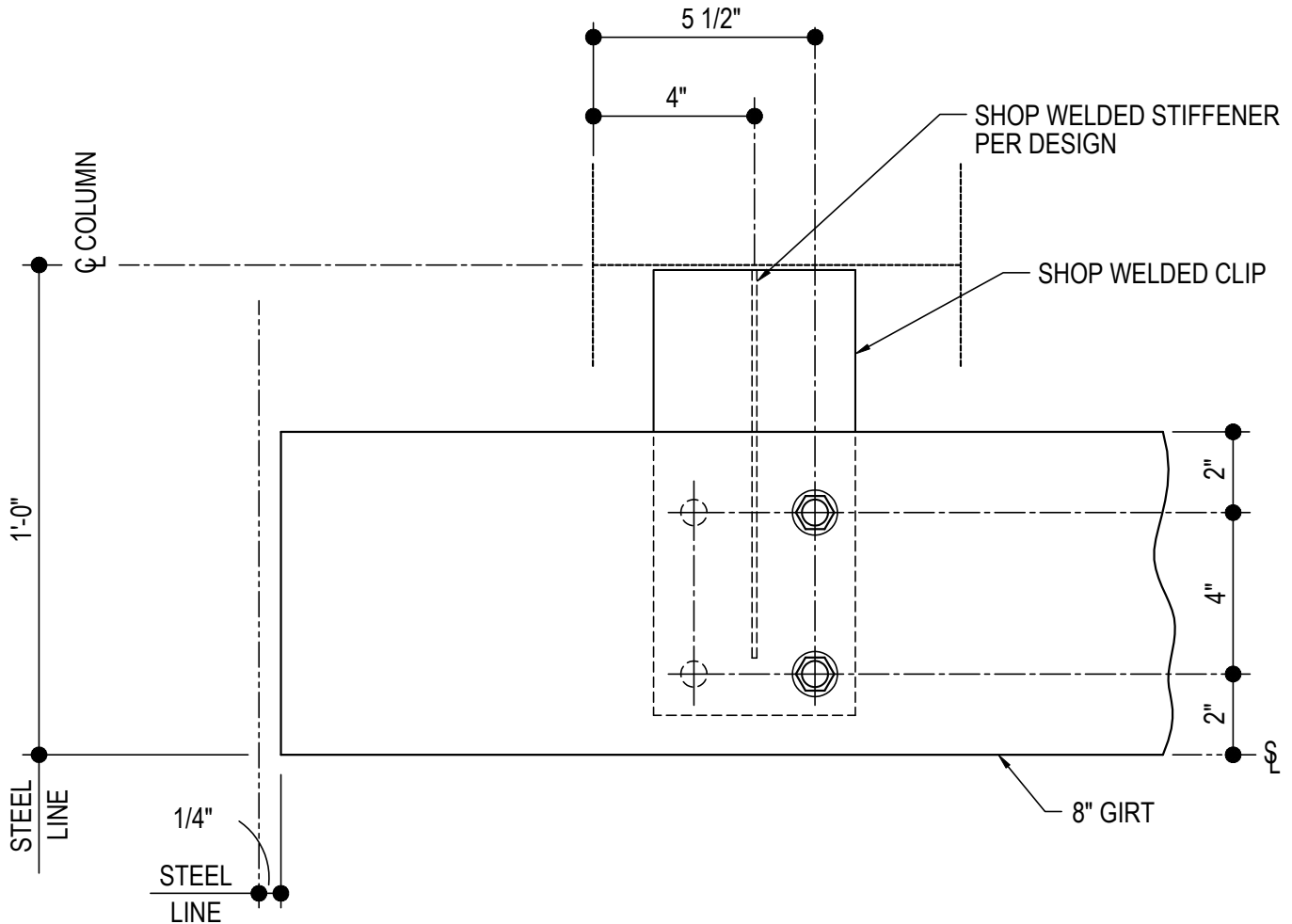
Detailer Notes:

- 1) N/A

CF0500 - 8" GIRT TERMINATION DETAIL

[Download the DWG file by clicking here.](#)

LEFT HAND DETAIL SHOWN,
RIGHT HAND OPPOSITE



8" GIRT TERMINATION DETAIL

NOTE: USE (2) 1/2"x 1 1/4" A307 BOLTS H0500/NUTS H0400

REFERENCE ERECTOR NOTE FOR TYPICAL WASHER REQUIREMENTS

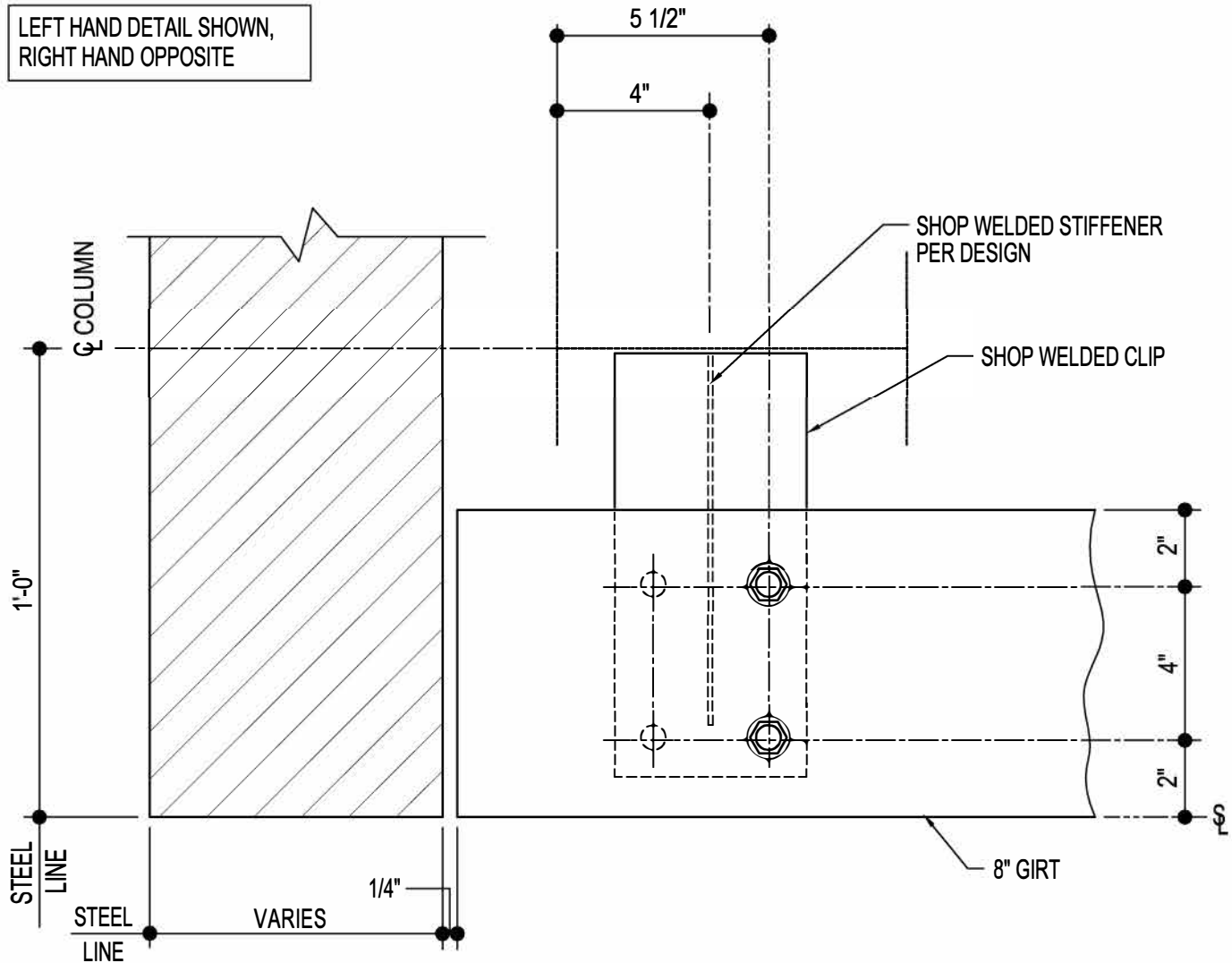
CF0500

Detailer Notes:

- 1) WELDED CLIP: GRC01
- 2) ADD STIFFENER PER DESIGN: WS_12

CF0510 - 8" GIRT TERMINATION @ MASONRY WALL DETAIL

[Download the DWG file by clicking here.](#)



8" GIRT TERMINATION DETAIL

NOTE: USE (2) 1/2" x 1 1/4" A307 BOLTS H0500/NUTS H0400
REFERENCE STANDARD WASHER DETAIL FOR TYPICAL WASHER
REQUIREMENTS

CF0510

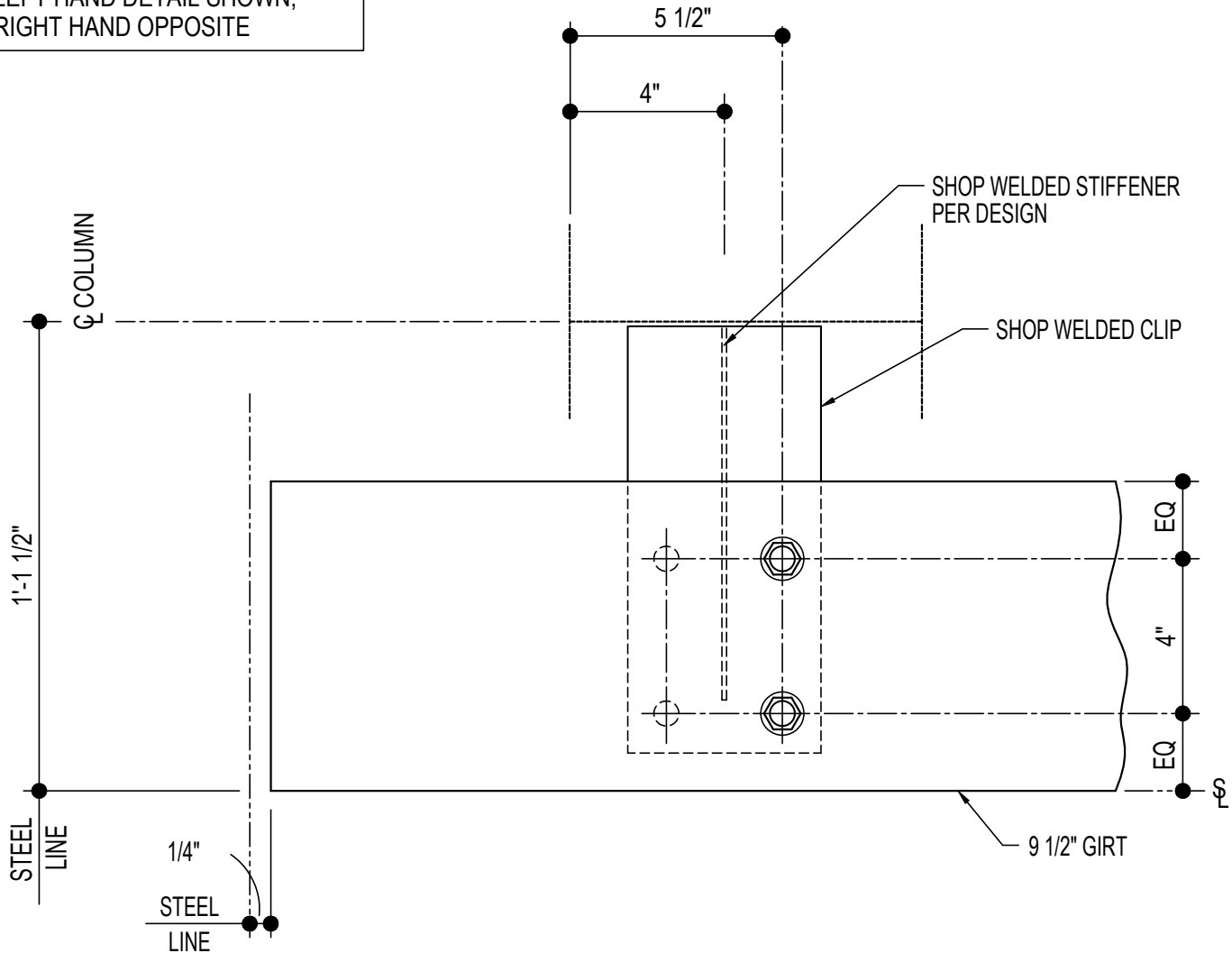
Detailer Notes:

- 1) WELDED CLIP: GRC01
- 2) ADD STIFFENER PER DESIGN: WS_12

CF0520 - 9 1/2" GIRT TERMINATION DETAIL

[Download the DWG file by clicking here.](#)

LEFT HAND DETAIL SHOWN,
RIGHT HAND OPPOSITE



9 1/2" GIRT TERMINATION DETAIL

NOTE: USE (2) 1/2"x 1 1/4" A307 BOLTS H0500/NUTS H0400
REFERENCE ERECTOR NOTE FOR TYPICAL WASHER REQUIREMENTS

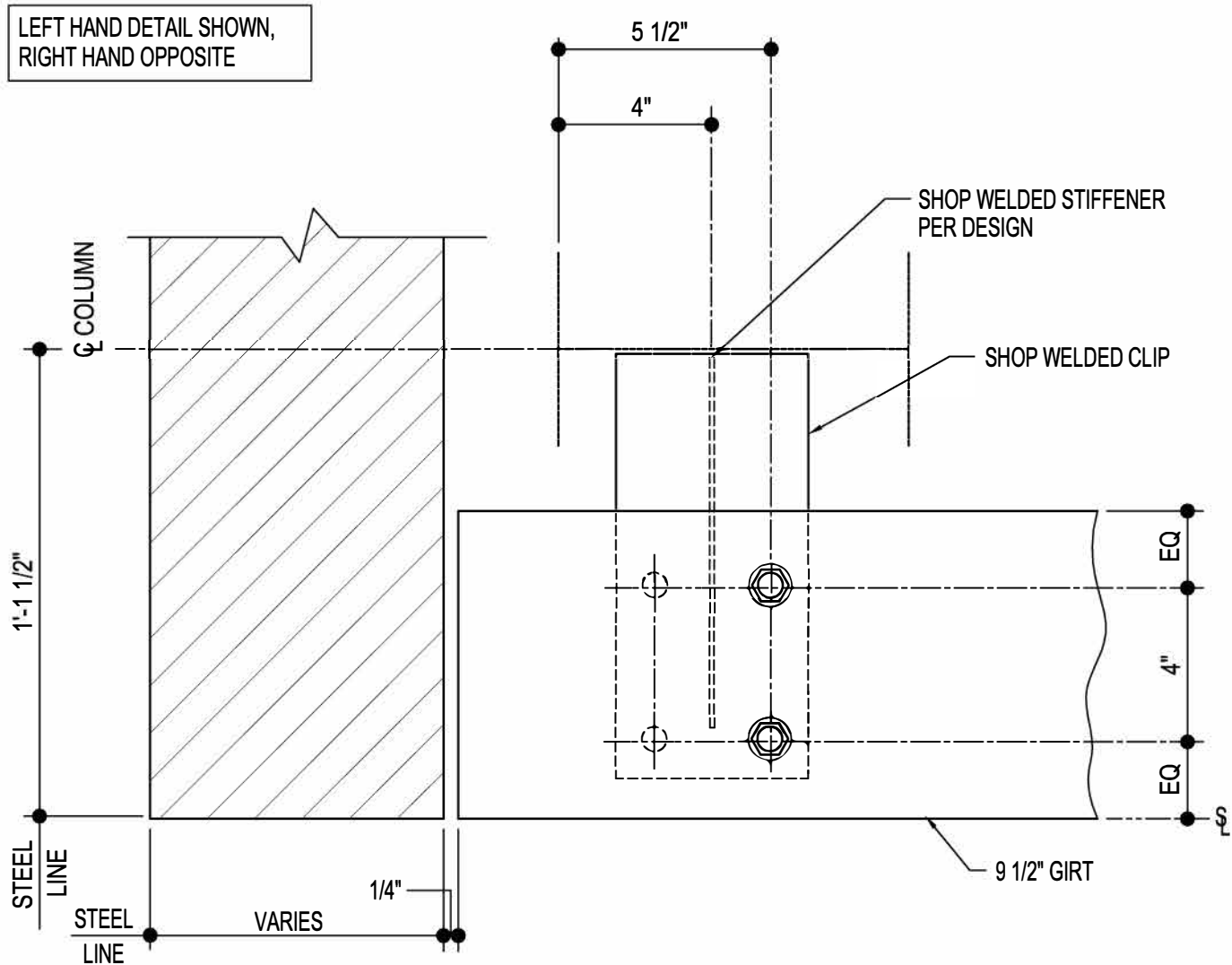
CF0520

Detailer Notes:

- 1) WELDED CLIP: GRC02
- 2) ADD STIFFENER PER DESIGN: WS_12

CF0530 - 9 1/2" GIRT TERMINATION @ MASONRY WALL DETAIL

[Download the DWG file by clicking here.](#)



9 1/2" GIRT TERMINATION DETAIL

NOTE: USE (2) 1/2" x 1 1/4" A307 BOLTS H0500/NUTS H0400

REFERENCE STANDARD WASHER DETAIL FOR TYPICAL WASHER REQUIREMENTS

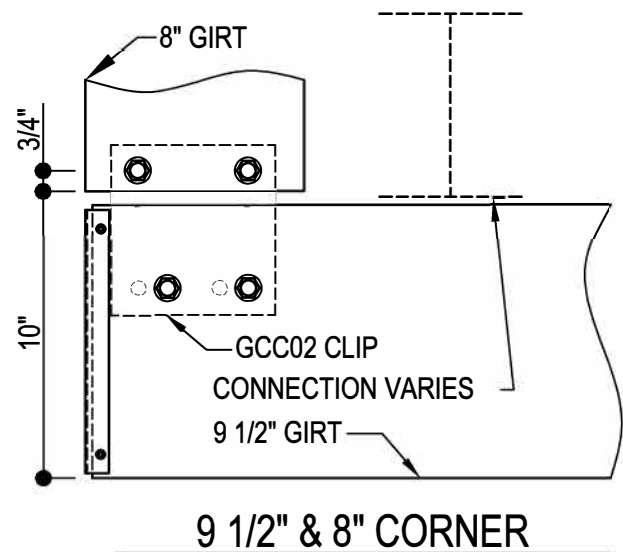
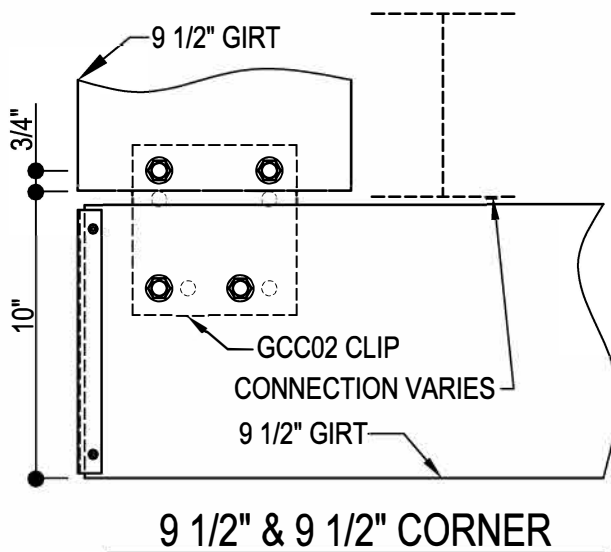
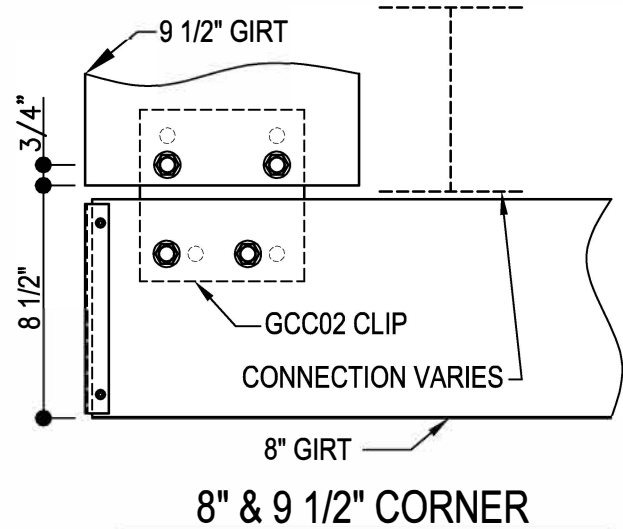
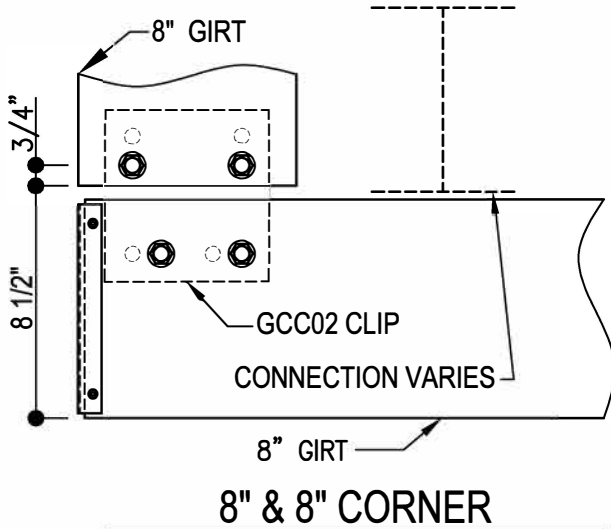
CF0530

Detailer Notes:

- 1) WELDED CLIP: GRC02
- 2) ADD STIFFENER PER DESIGN: WS_12

CF1001 - BOLT PLACEMENT DETAIL

[Download the DWG file by clicking here.](#)



BYPASS GIRT BOLT PLACEMENT DETAIL

REFERENCE WASHER DETAIL FOR TYPICAL WASHER REQUIREMENTS
 GIRT CLIPS ARE FACTORY PUNCHED TO BE USED WITH MULTIPLE GIRT DEPTHS.
 REFER TO THE DETAILS ABOVE TO DETERMINE WHICH HOLES ARE UTILIZED.

CF1001

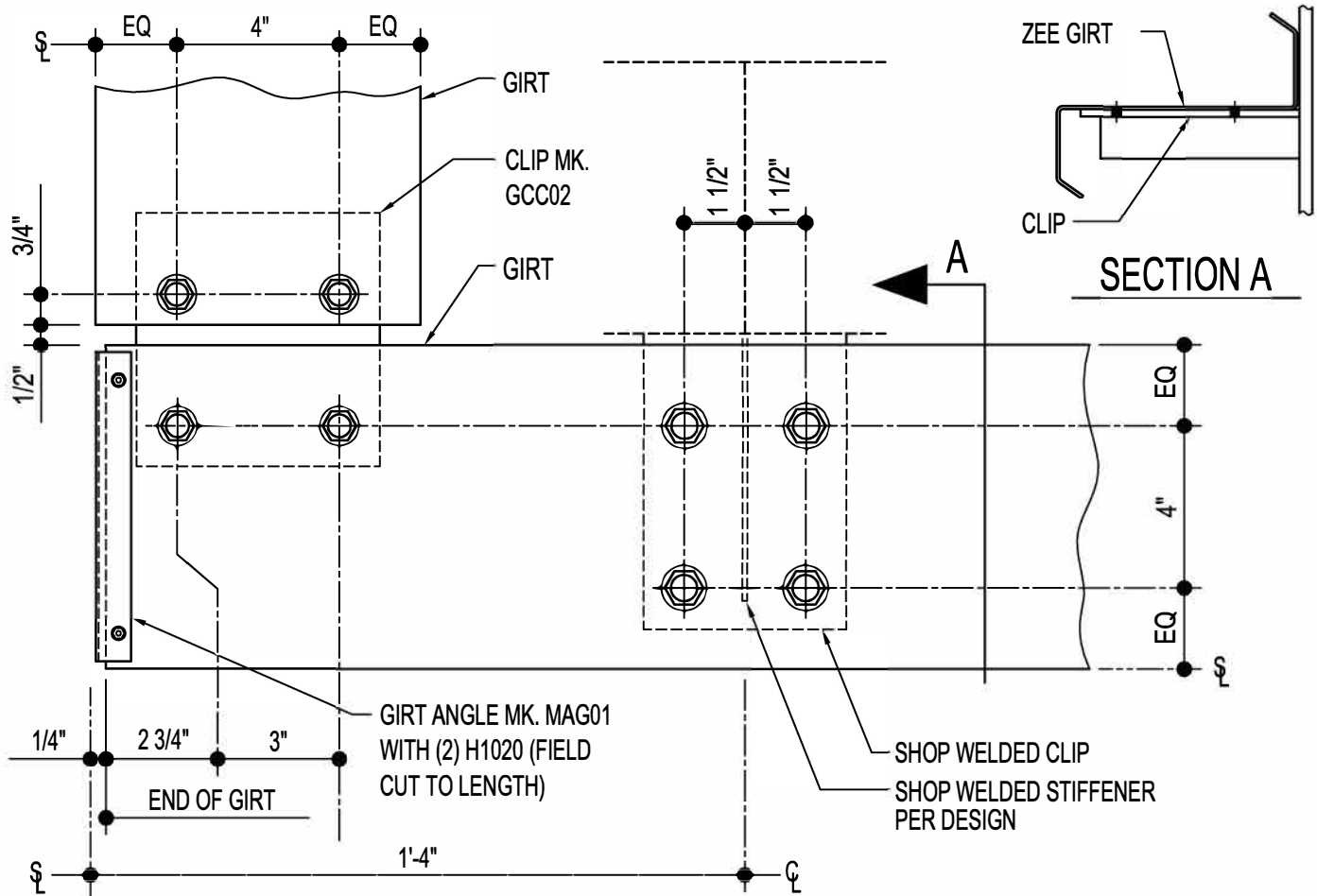
Detailer Notes: 1) N/A

CF1010 - BYPASS CORNER GIRT DETAIL

[Download the DWG file by clicking here.](#)

ERECTOR NOTE

GIRT CLIPS ARE FACTORY PUNCHED TO BE USED WITH MULTIPLE GIRT DEPTHS. REFER TO THE STANDARD BOLT PLACMENT DETAIL(S) FOR PROPER BOLT PLACEMENT.



BYPASS GIRT CORNER DETAIL

LEFT HAND DETAIL SHOWN, RIGHT HAND OPPOSITE

NOTE: USE (8) 1/2" x 1 1/4" A307 BOLTS H0500/NUTS H0400

REFERENCE STANDARD WASHER DETAIL FOR TYPICAL WASHER REQUIREMENTS

CF1010

Detailer Notes:

1) (4) HOLE WELDED CLIP:
8" - PCU01
9 1/2" - GCB62
12" - GCB12

2) ADD STIFFENER PER DESIGN:
8" GIRT: WS_04
9 1/2" GIRT: WS_04
12" GIRT: WS_12

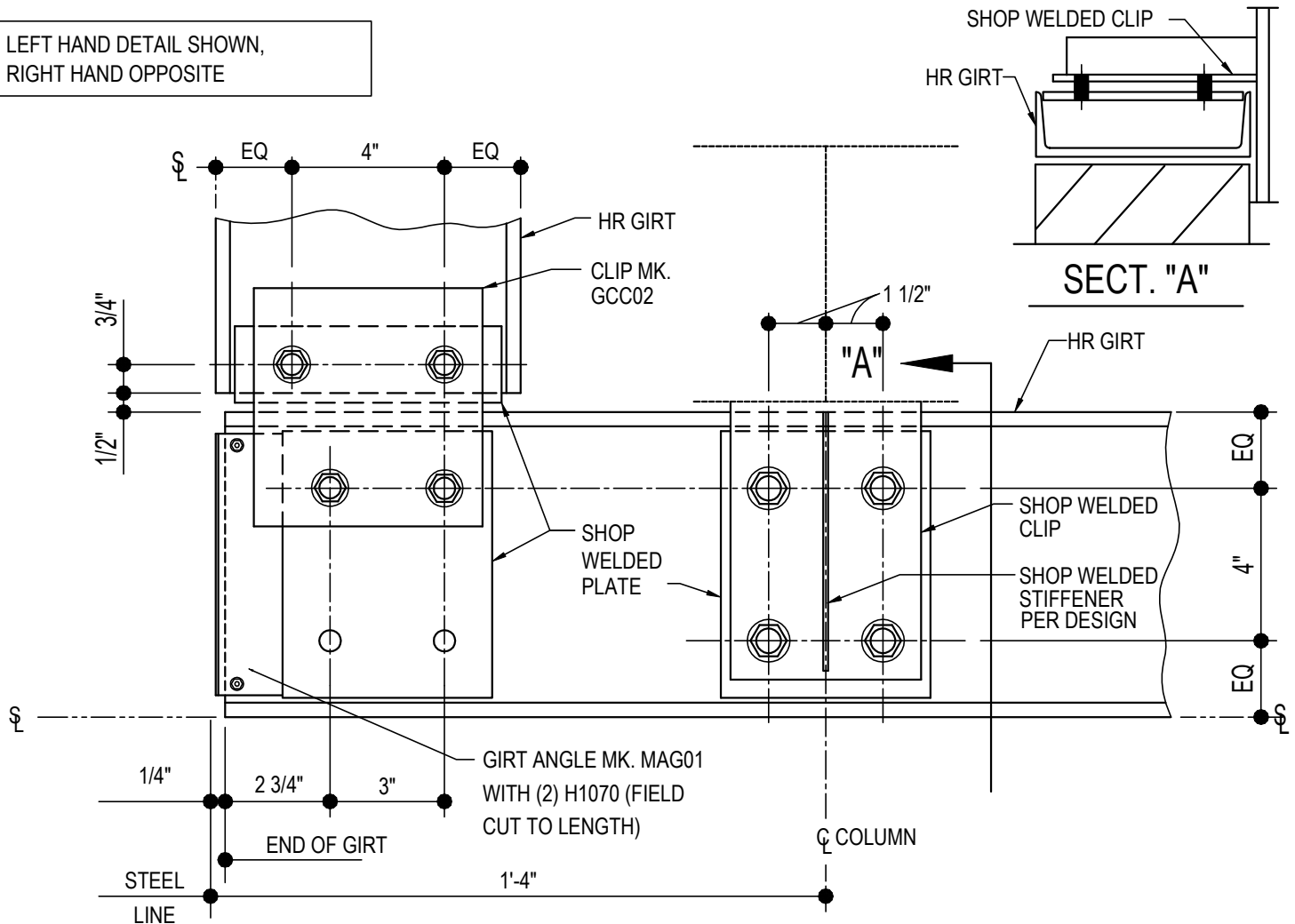
CF1060 - BYPASS CORNER HR GIRT DETAIL

[Download the DWG file by clicking here.](#)

ERECTOR NOTE

GIRT CLIPS ARE FACTORY PUNCHED TO BE USED WITH MULTIPLE GIRT DEPTHS. REFER TO THE STANDARD BOLT PLACMENT DETAIL(S) FOR PROPER BOLT PLACEMENT.

LEFT HAND DETAIL SHOWN,
RIGHT HAND OPPOSITE



HOT-ROLLED CORNER GIRT DETAIL

BYPASS HOT-ROLLED 8" CEE GIRTS AT CORNER

NOTE: USE (8) 1/2" x 2" A325 BOLTS (H0603) & NUTS (H0300)

REFERENCE STANDARD WASHER DETAIL FOR TYPICAL WASHER REQUIREMENTS

CF1060

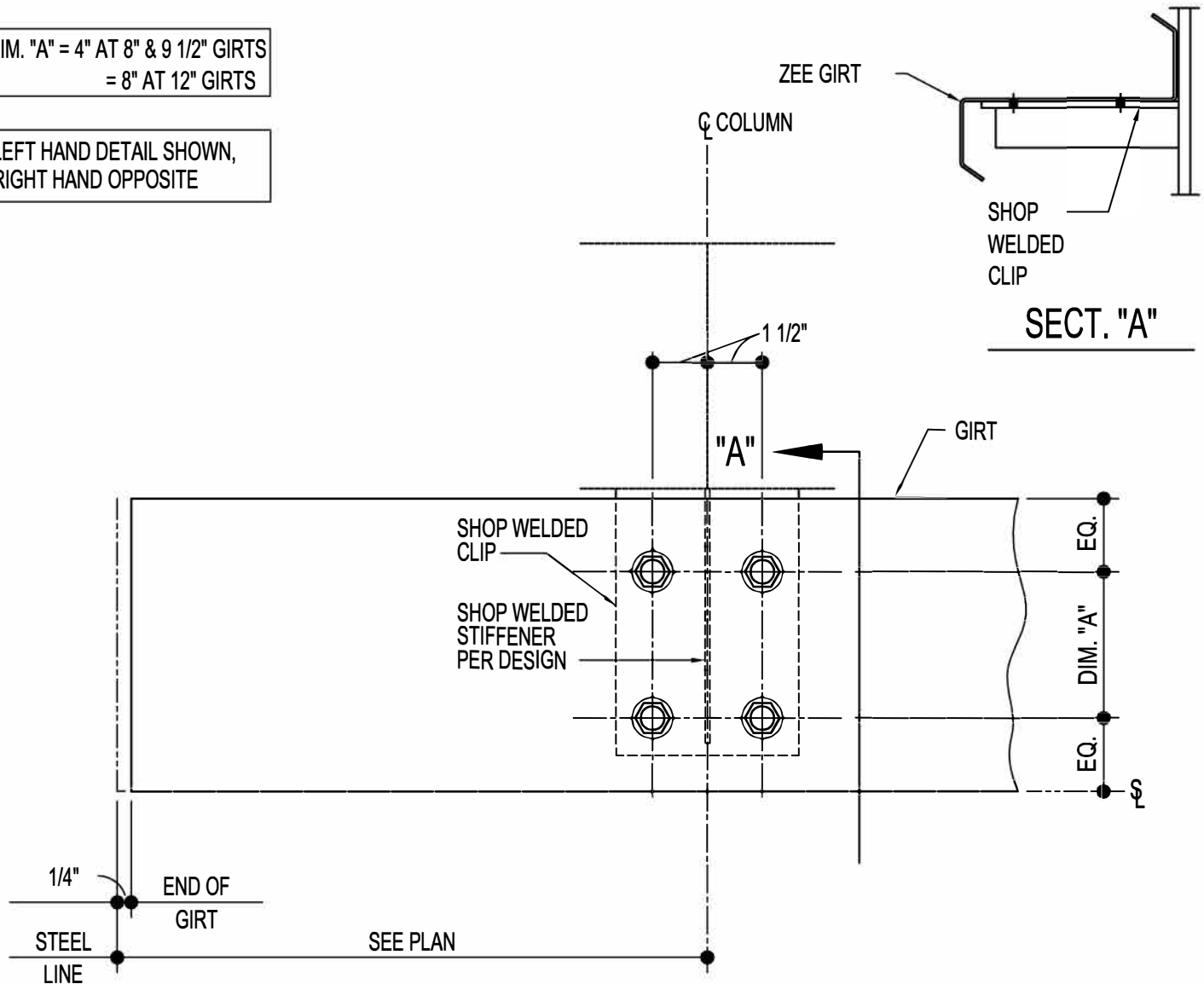
- Detailer Notes:**
- 1) (4) HOLE WELDED CLIP TO COLUMN : GCM04
 - 2) (4) HOLE PLATE WELDED TO HR GIRT : HCD08
 - 3) (2) HOLE PLATE WELDED TO HR GIRT: HCS08
 - 4) ADD STIFFENER PER DESIGN: WS_04

CF1200 - BYPASS CORNER GIRT TERMINATION DETAIL

[Download the DWG file by clicking here.](#)

DIM. "A" = 4" AT 8" & 9 1/2" GIRTS
= 8" AT 12" GIRTS

LEFT HAND DETAIL SHOWN,
RIGHT HAND OPPOSITE



GIRT TERMINATION DETAIL

LEFT HAND DETAIL SHOWN, RIGHT HAND OPPOSITE

NOTE: USE (4) 1/2" x 1 1/4" A307 BOLTS H0500/NUTS H0400

REFERENCE STANDARD WASHER DETAIL FOR TYPICAL WASHER
REQUIREMENTS

CF1200

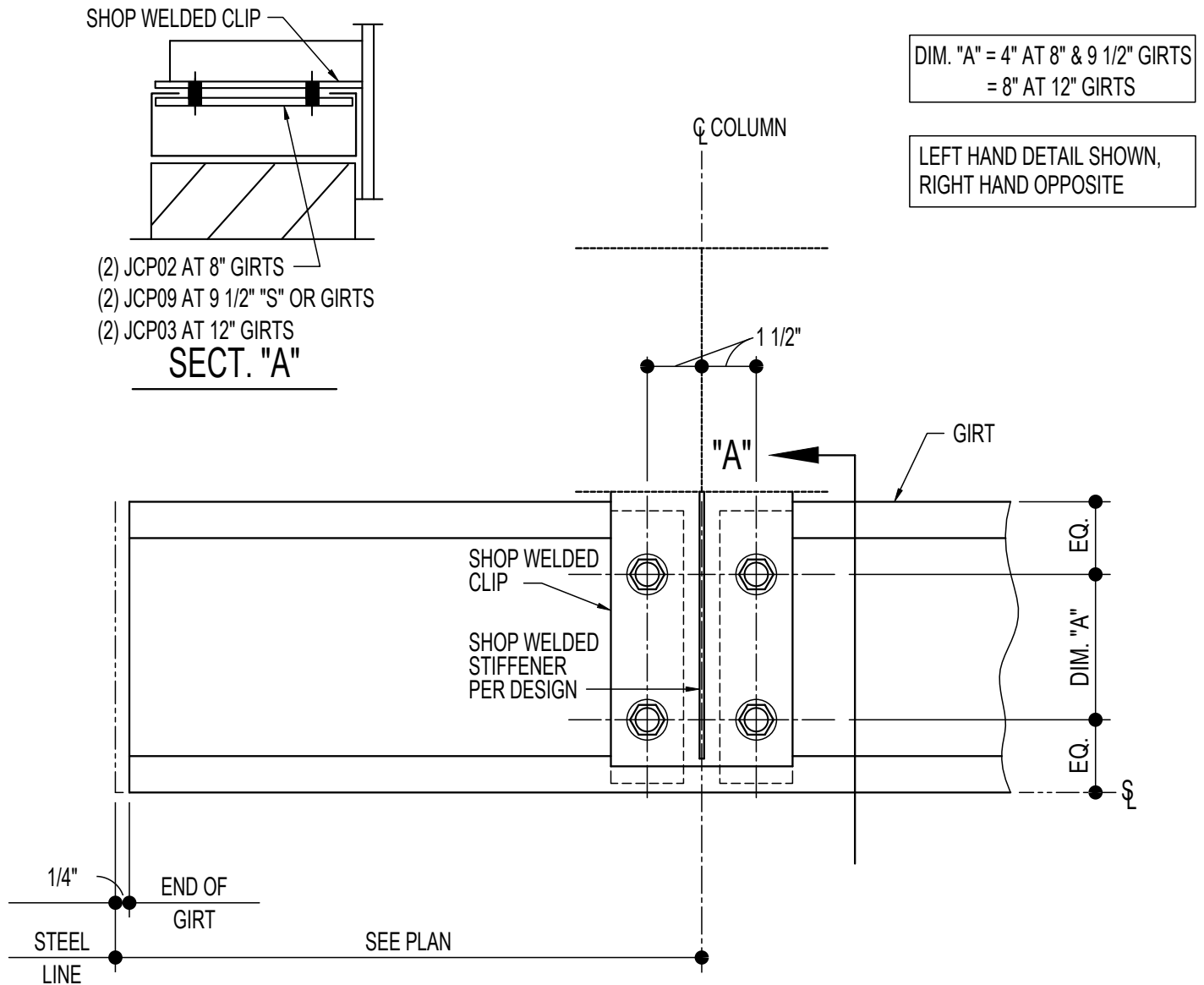
Detailer Notes:

- 1) (4) HOLE WELDED CLIP:
8" - PCU01
9 1/2" - GCB62
12" - GCB12

- 2) ADD STIFFENER PER DESIGN:
8" GIRT: WS_04
9 1/2" GIRT: WS_04
12" GIRT: WS_12

CF1210 - BYPASS CORNER GIRT TERMINATION DETAIL

[Download the DWG file by clicking here.](#)



GIRT TERMINATION DETAIL

NOTE: USE (4) 1/2" x 1 1/4" A307 BOLTS H0500/NUTS H0400
REFERENCE STANDARD WASHER DETAIL FOR TYPICAL WASHER
REQUIREMENTS

CF1210

Detailer Notes:

1) (4) HOLE WELDED CLIP:
8" - GCM04
9 1/2" - GCM95
12" - GCM12

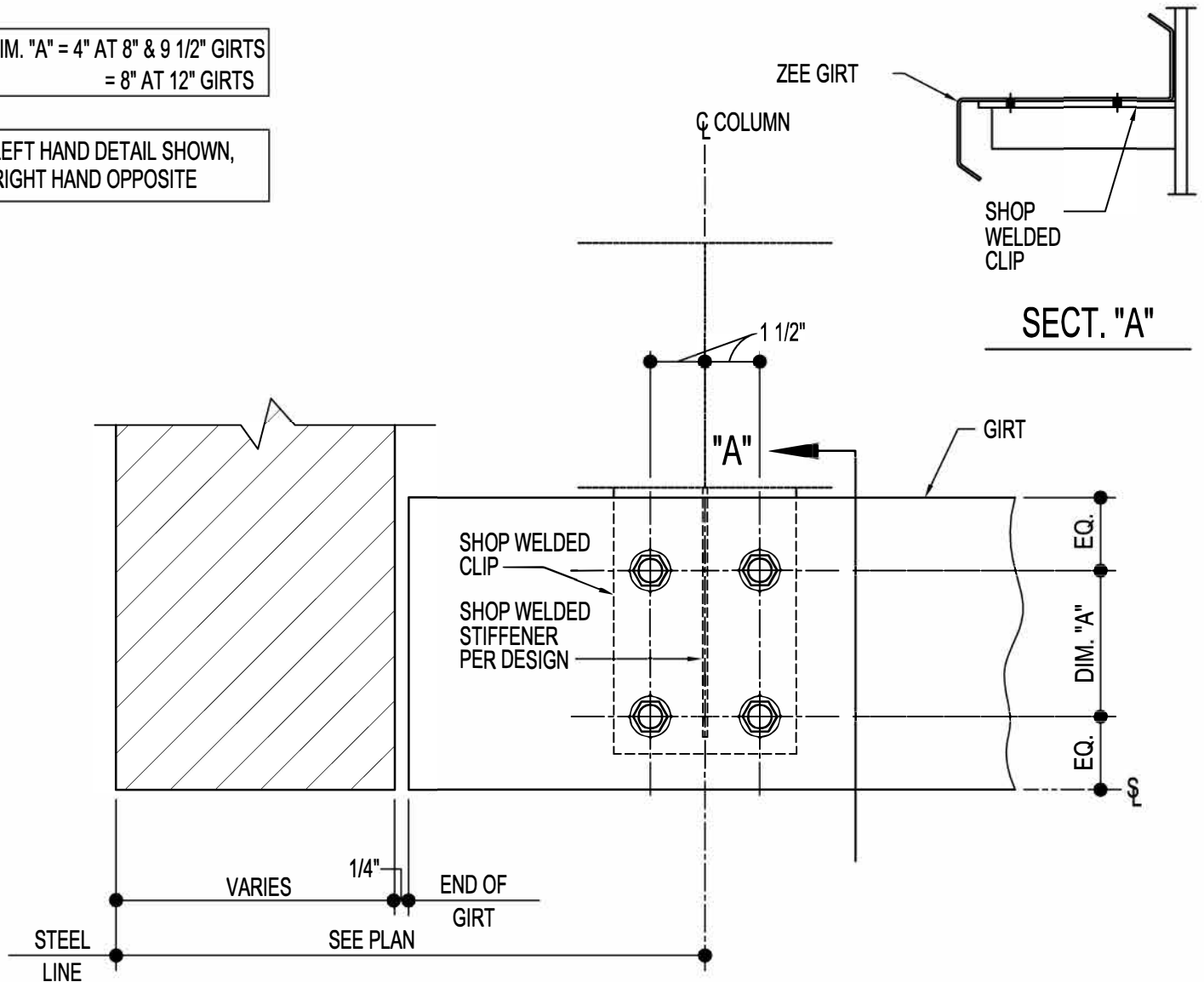
2) ADD STIFFENER PER DESIGN:
8" GIRT: WS_04
9 1/2" GIRT: WS_04
12" GIRT: WS_12

CF1260 - BYPASS CORNER GIRT TERMINATION @ MASONRY WALL DETAIL

[Download the DWG file by clicking here.](#)

DIM. "A" = 4" AT 8" & 9 1/2" GIRTS
= 8" AT 12" GIRTS

LEFT HAND DETAIL SHOWN,
RIGHT HAND OPPOSITE



GIRT TERMINATION DETAIL

NOTE: USE (4) 1/2" x 1 1/4" A307 BOLTS H0500/NUTS H0400
REFERENCE STANDARD WASHER DETAIL FOR TYPICAL WASHER
REQUIREMENTS

CF1260

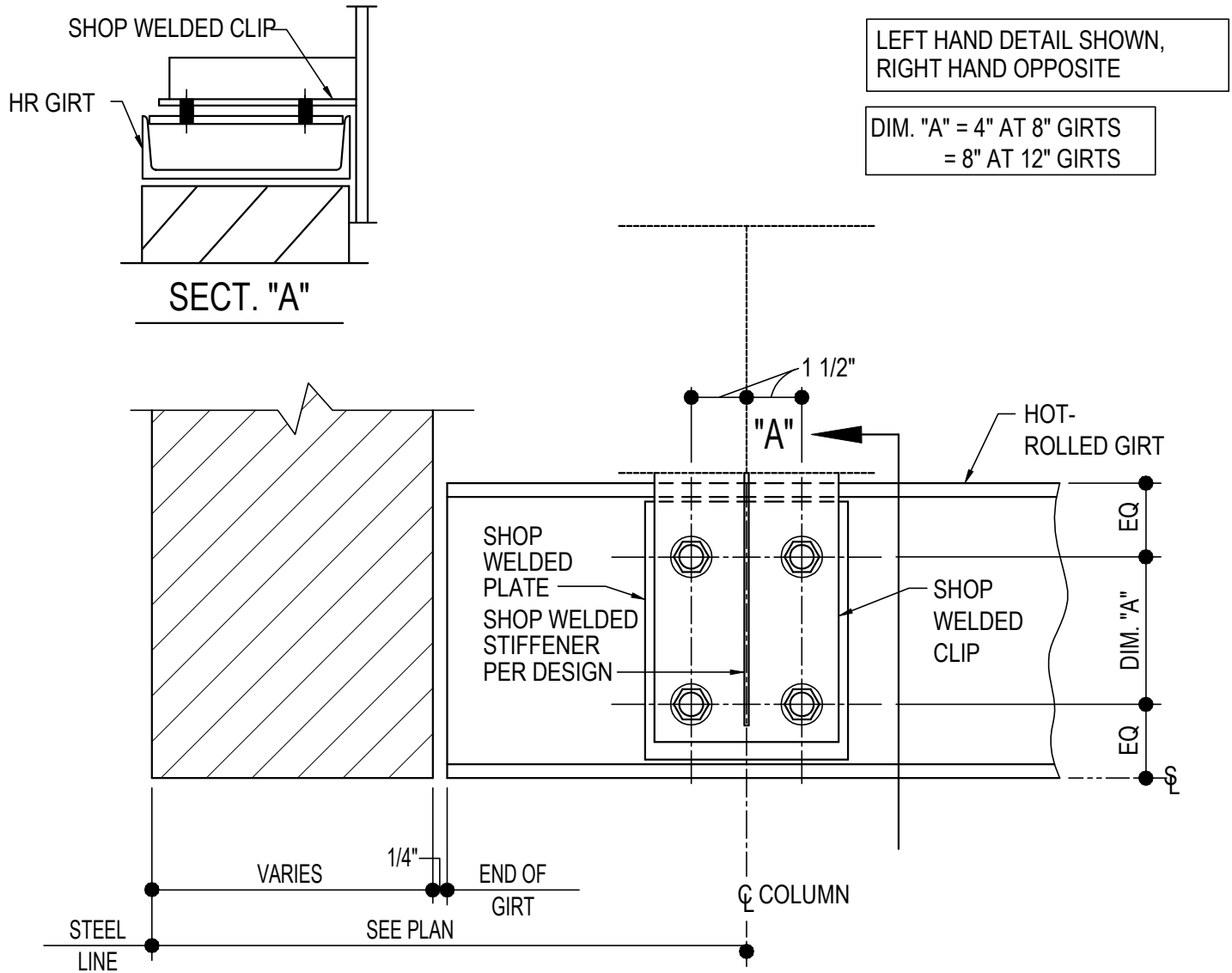
Detailer Notes:

1) (4) HOLE WELDED CLIP:
8" - PCU01
9 1/2" - GCB62
12" - GCB12

2) ADD STIFFENER PER DESIGN:
8" GIRT: WS_04
9 1/2" GIRT: WS_04
12" GIRT: WS_12

CF1280 - HR GIRT TERMINATION @ MASONRY WALL DETAIL

[Download the DWG file by clicking here.](#)



HOT-ROLLED GIRT TERMINATION DETAIL

NOTE: USE (4) 1/2" x 2" A325 BOLTS (H0603) & NUTS (H0300)
 REFERENCE STANDARD WASHER DETAIL FOR TYPICAL WASHER
 REQUIREMENTS

CF1280

- Detailer Notes:**
- | | |
|---------------------------------------|---------------------------------|
| 1) (4) HOLE WELDED CLIP TO COLUMN : | 3) ADD STIFFENER PER DESIGN TO |
| 8" - GCM04 | (4) HOLE WELDED CLIP TO COLUMN: |
| 12" - GCB12 | 8" GIRT: WS_04 |
| 2) (4) HOLE PLATE WELDED TO HR GIRT : | 12" GIRT: WS_12 |
| 8" - HCD08 | |
| 12" - HCD12 | |